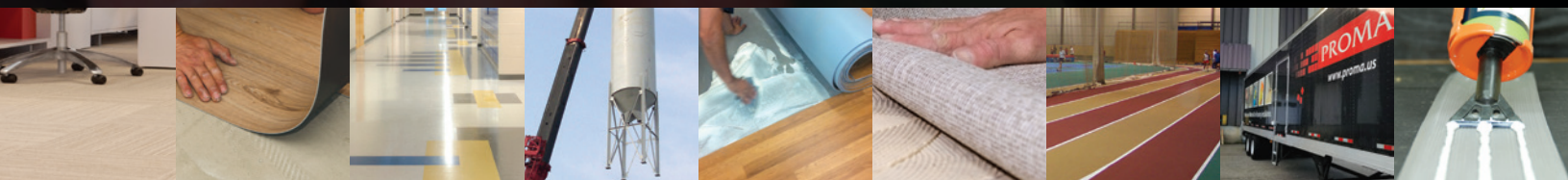


PROMA



**PROFESSIONAL
MATERIALS FOR
FLOORING
INSTALLATION**

**FLOOR COVERING
ADHESIVES**

DISCOVER THE DIFFERENCE

At PROMA, we conduct business with a goal in mind: **'Always offer the best products, services, and value.'** It's at the heart of everything we do, from product development to customer service, and everything in between. When you take all of what PROMA has to offer and add to that competitive pricing and unmatched dependability, you receive one of the best values available for flooring installation.

INNOVATIVE SOLUTIONS

Always proactive, always listening, always moving forward. PROMA's research and development team works closely with our customers and with the world's top raw materials suppliers. This synergy allows PROMA to develop new and innovative products that excel beyond current industry standards and enables us to bring tomorrow's technology to today's products.

SUPERIOR QUALITY

PROMA offers one of the broadest array of products available so you can choose the right solution for any given job. Our products have been engineered to provide user-friendly, time-saving jobsite characteristics and exceptional, long-lasting performance through strength, flexibility and durability.

ECOLOGICAL AND RESPONSIBLE

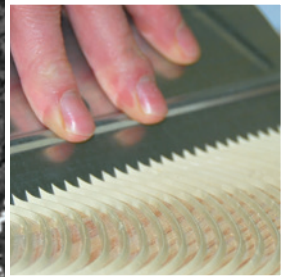
Many of PROMA's products have been formulated to have minimal impact on the environment, are safe to apply, and do not contribute to unfavorable jobsite conditions or adversely affect indoor air quality. Some also help contribute valuable points to LEED® certification, the accepted standard for Green Building in the construction industry.

PERSONAL SERVICE

We understand that just offering great products is not nearly enough. You need a partner that will stand by you, before, during, and after the sale to help you achieve success. A partner with an experienced technical support team that helps every project go smoothly. A partner who will help protect your good reputation by offering the quality, personal service and support you and your customers need. PROMA is that partner.



PROMA





Products with this logo contain a high percentage of recycled content providing a more ecological and sustainable solution to traditional products.



Products with this logo are designed for a safer jobsite environment by being free of solvents, nonflammable, low-odor, and low in TVOCs.



Products with this logo have characteristics that improve indoor air quality compared to Portland cement-based products.



This logo is specific for cleaners and sealers that are designed with a multitude of environmentally-friendly characteristics relating to application and use.



Products with this logo are scratch-free and free of the environmental and health risks of crystalline silica.

ECOLOGICAL, RESPONSIBLE

PROMA is committed to ecological/responsible operations and products that are considerate of natural resources, respectful of the environment, and contribute to a more sustainable future in the flooring industry, our community, and the world.

ECO-FRIENDLY INGREDIENTS

PROMA formulates products using advanced ingredients that are safe to use with minimal impact on the environment, while maintaining premium performance standards. Certain products even contain recycled materials, which helps reduce pollution and greenhouse gas emissions, and conserve natural resources.

SUSTAINABLE PACKAGING

PROMA is transitioning all powdered products to 100%-recyclable plastic packaging. Our pioneering plastic technology uses less material than traditional packaging, vacuum-seals products to the smallest size possible for greener transport, and eliminates waste from seepage. The 100% recyclability of the plastic also lessens the need for new raw materials and reduces waste in landfills and the environment.

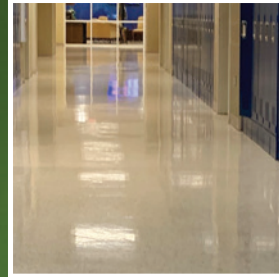
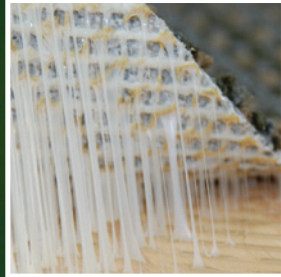
SAFER CONDITIONS

PROMA products have been carefully designed to be safer for the applicator and building owner. We use nontoxic ingredients whenever possible, without compromising quality, in order to be less harmful, improve indoor air quality and protect the environment.

LEED® CONTRIBUTION

Certain PROMA products and their multiple use characteristics, recycled content and low-VOC emissions can contribute toward attaining credit requirements within the LEED® (Leadership in Environmental and Energy Design) USGBC-NC and Canada-NC Rating Systems. Products have achieved independent validation by the renowned environmental auditor Vertima™ (vertima.ca); letters of credit conformity can be provided upon request.







SURFACE PREPARATION

Your installation and reputation depend upon success, so lay a good foundation starting with PROMA Surface Preparation Products.

PROMA provides the right solution to correct nearly any surface condition prior to a flooring installation, including: patching for minor surface corrections; self-leveling for resurfacing entire floors; screeds for filling trenches and raising surfaces; systems for moisture management; acoustic underlayments for sound suppression; and more!

PRIMERS

PATCHING AND FINISHING

MORTAR BEDS AND CONCRETE REPAIR

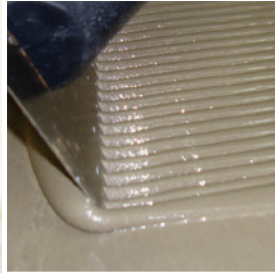
SELF-LEVELING UNDERLAYMENTS

WATERPROOFING AND CRACK ISOLATION

ACOUSTIC UNDERLAYMENT

MOISTURE BARRIER

Reference PROMA's Surface Preparation brochure or visit proma.ca for product information.





CARPET, WALL-BASE AND VINYL ADHESIVES
SPECIALTY ADHESIVES



PRO 4150™

PRO 4150™ is a **premium-quality, fast-grabbing commercial carpet adhesive** for use with almost all types of carpet backings. PRO 4150 has strong wet grab for even the stiffest flooring, optimized open time for adjustability, and superior long-term bond strength.



- **Strong wet grab for even the stiffest flooring**
- **Optimized open time for better adjustability**
- **Excellent residual tack for more consistent results**
- **Up to a 10 year limited system warranty when used with qualifying PROMA Surface Preparation products (see PROMA Limited System Warranty Program for more information)**
- For the installation of commercial carpet with most backings, including jute, woven, polypropylene (Action Bac®), urethane foam (Enhancer®), latex unitary, hot melt, and needle-punch*
- For residential applications, such as dormitories, apartments and condominiums
- For high-traffic commercial installations, such as offices, hospitality, airports, retail, schools and convention centers
- Antimicrobial protection to prevent the growth of mold, mildew and bacteria
- Solvent free formula for improved indoor air quality
- Low odor
- Easy to apply and clean
- Freeze/thaw stable formula (5 Cycles At -12 °C [10°F])
- Contributes to LEED® objectives and requirements

**For a backing not listed here, contact PROMA's Technical Services Department.*

Packaging	Product Code
3.79 L (1 US gal) pail	04154
15 L (4 US gal) pail	04155



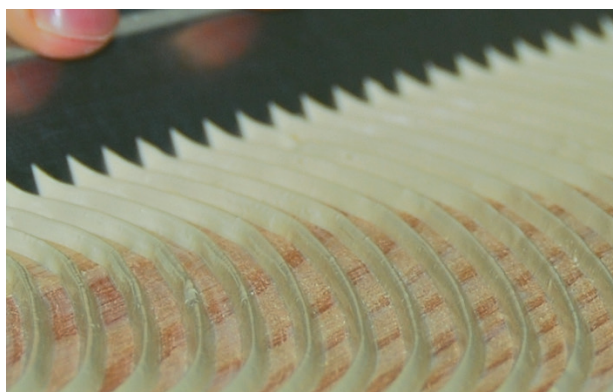
PRO 6350™

PRO 6350™ is a **premium, universal acrylic adhesive** for the installation of solid vinyl and fiberglass backed tile, vinyl plank, vinyl sheet, homogeneous PVC, cushion backed or mineral-backed sheet goods, vinyl backed carpet, action back carpet and rubber flooring. It is a wet set adhesive optimally-designed to be used over porous substrates. It will perform very well over standard non-porous substrates provided the flooring material can breathe to allow the adhesive to cure normally.



- **Optimized open time for better adjustability**
- **Non-staining formula**
- **Resistant to plasticizer migration**
- **Up to a Lifetime limited system warranty when used with qualifying PROMA Surface Preparation products (see PROMA Limited System Warranty Program for more information)**
- For the installation of solid vinyl tile and plank, fiberglass-backed flooring, and homogeneous PVC
- Install cushion-backed sheet goods, felt-backed or mineral-backed sheet goods
- Install vinyl-backed carpet and rubber tiles
- For residential applications, such as dormitories, apartments, condominiums and homes
- For high-traffic commercial installations, such as offices, hospitals, airports, retail stores, schools and convention centers
- Antimicrobial protection to prevent the growth of mold, mildew and bacteria
- Solvent free formula for improved indoor air quality
- Low VOC
- Easy to apply and clean
- Freeze/thaw stable formula (5 Cycles at -12°C [10°F])
- Contributes to LEED® objectives and requirements

Packaging	Product Code
3.79 L (1 US gal) pail	06354
15 L (4 US gal) pail	06355





PRO 7450™

PRO 7450™ is a **premium-quality clear thin-spread adhesive** used for the installation of vinyl composition tile (VCT) in residential and commercial installations. PRO 7450 has excellent residual tack and extended working time. It dries clear so that chalk lines remain visible during installation.



- **Dries clear so that chalk lines remain visible during installation**
- **Excellent residual tack and bond strength, minimizing tile movement**
- **Extended working time up to 24 hours**
- **Up to a Lifetime limited system warranty when used with qualifying PROMA Surface Preparation products (see PROMA Limited System Warranty Program for more information)**
- For the installation of vinyl composition tile (VCT)
- For residential applications, such as dormitories, apartments and condominiums
- For high-traffic commercial installations, such as offices, hospitals, airports, retail stores, schools and convention centers
- Antimicrobial protection to prevent the growth of mold, mildew and bacteria
- Solvent free formula for improved indoor air quality
- High moisture resistance, up to 8 lbs per 1,000 square feet
- Recommended up to 97% R.H. as per ASTM F2170
- Alkali resistant up to pH 11
- Very low VOC and odor
- Easy to apply and clean
- Freeze/thaw stable formula (5 Cycles at -12°C [10°F])
- Contributes to LEED® objectives and requirements

Packaging	Product Code
3.79 L (1 US gal) pail	07451
15 L (4 US gal) pail	07454



PRO 8010™

PRO 8010™ is a **premium-quality universal pressure-sensitive adhesive** used for the installation of vinyl or non-vinyl backed carpet tile, luxury vinyl plank (LVP), luxury vinyl tile (LVT), vinyl composition tile (VCT), rubber or vinyl-backed resilient flooring, synthetic-backed carpet tile or to install carpet cushion under pad for double-glue-down installations. It can also be used to install PVC or fiberglass reinforced tile. PRO 8010 spreads easily with a trowel or a roller. Depending upon the chosen installation method, it can provide a permanent or releasable bond by using wet or dry setting respectively.



- **Excellent residual tack for more consistent results**
- **Depending upon the chosen installation method, it can provide a permanent or releasable bond by using wet or dry setting respectively**
- **Up to a Lifetime limited system warranty when used with qualifying PROMA Surface Preparation products (see PROMA Limited System Warranty Program for more information)**
- For the installation of vinyl-backed carpet tile, luxury vinyl plank (LVP), luxury vinyl tile (LVT) and vinyl composition tile (VCT)
- For the installation of rubber or vinyl-backed resilient flooring
- For the installation of synthetic-backed carpet tile and carpet cushion for double-glue-down installations
- Install PVC and fiberglass-reinforced tile
- For residential applications, such as dormitories, apartments and condominiums
- For high-traffic commercial installations, such as offices, hospitals, airports, retail stores, schools and convention centers
- Antimicrobial protection to prevent the growth of mold, mildew and bacteria
- Solvent free formula for improved indoor air quality
- High moisture resistance, up to 8 lbs per 1,000 square feet
- Recommended up to 90% R.H. as per ASTM F2170 (92% R.H. water of convenience*)
- Low odor
- Easy to apply with a trowel or roller, and easy to clean
- Freeze/thaw stable formula (5 Cycles at -12°C [10°F])
- Contributes to LEED® objectives and requirements

* PROMA defines water of convenience from the initial water made available during concrete placement.

Packaging	Product Code
3.79 L (1 US gal) pail	08010
15 L (4 US gal) pail	08011



PRO 9750™

PRO 9750 is a **premium**, solvent-free, stain-free wall base adhesive, with strong wet grab, specially designed for the installation of **vinyl, rubber and carpet wall base**. PRO 9750 is easy to use, easy to clean, resistant to breakdown from plasticizer migration.



- **Strong wet grab and bond strength prevents slip during installation and holds corners tight**
- **Light-colored formula will not stain**
- **Up to a Lifetime limited system warranty when used with qualifying PROMA Surface Preparation products (see PROMA Limited System Warranty Program for more information)**
- For the installation of vinyl, rubber and carpet wall base
- Use for stair thread installation
- Solvent free formula for improved indoor air quality
- Antimicrobial protection resists the growth of mold, mildew and bacteria
- Prevents breakdown of adhesive due to plasticizer migration from vinyl wall base
- Easy to apply and clean
- Freeze/thaw stable formula
- Contributes to LEED® objectives and requirements

Packaging	Product Code
850 mL (28.7 oz) cartridge	09750
3.79 L (1 US gal) pail	09754
15 L (4 US gal) pail	09752



PRO 2100™

PRO 2100™ is a very low sag, **high-performance, two-component reactive adhesive** for installing PVC sheet, wood plank, rubber floor covering, carpet over conventional and non-conventional substrates such as concrete, steel or suitably prepared plastics materials*. Recommended for horizontal or vertical application. Its high-bond strength and extreme flexibility characteristics provide added protection from vibration and small in-plane expansion or contraction movement, ideal for elevator cabins and manufacturing plants.



**Contact PROMA's Technical Services Department for specific recommendations.*

- **Excellent resistance to humidity and wide temperature variation**
- **High bond strength**
- **Easy to spread with very high sag resistance**
- **Remains flexible after curing**
- **Up to a Lifetime limited system warranty when used with qualifying PROMA Surface Preparation products (see PROMA Limited System Warranty Program for more information)**
- Install over non-conventional substrates such as steel or suitably prepared plastics materials
- Suitable for horizontal or vertical applications
- Ideal for installations over fireproof surrounds, elevator cabins, and manufacturing plants up to 250 °C (482 °F)
- Very low VOC with 100% solid content once cured

Packaging	Product Code
5.4 kg (12 lb) kit	00311





PROMA Adhesives Inc.

9801, Parkway, Anjou, Quebec Canada H1J 1P3

Tel.: 514.852.8585 • Fax: 514.852.8225

Toll-free: 1 866.51.PROMA (77662)

Email: info@proma.ca

© 2022 PROMA Adhesives, Inc.