



PRO QUICK™ PLUS SYSTEM

2. MANUFACTURER

PROMA ADHESIVES Inc.

9801, Parkway, Anjou, Quebec Canada H1J 1P3

Tel.: 514.852.8585

Fax: 514.852.8225

Toll-free: 1 866.51.PROMA (77662)

Email: info@proma.ca

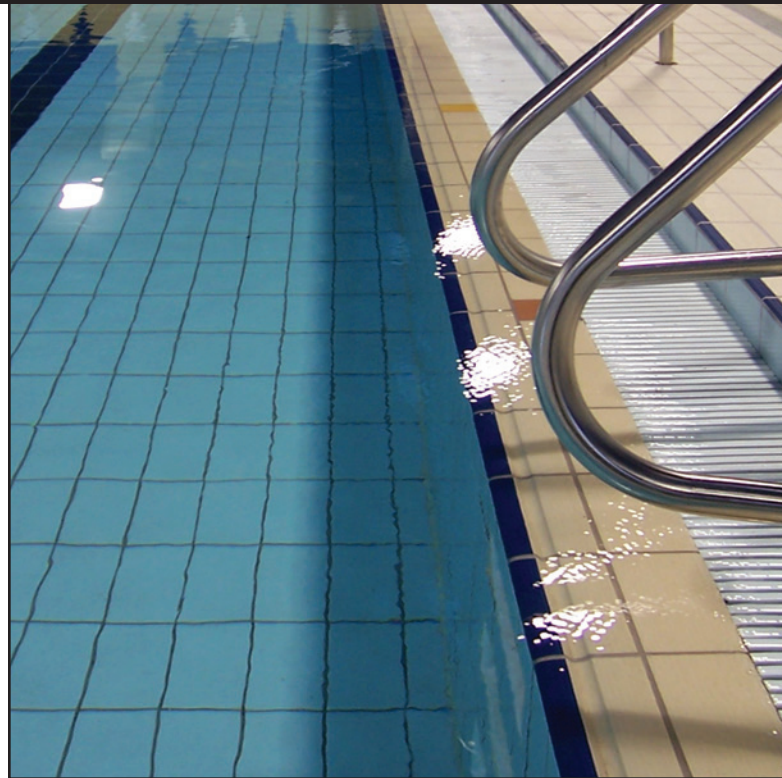
Web: www.proma.ca

3. PRODUCT DESCRIPTION

PRO QUICK™ PLUS SYSTEM is a **premium-quality**, fast-setting, high performance, two-component flexible system for the most demanding installations. Fast-track, interior or exterior, freeze/ thaw, high-traffic, water-submerged ... nearly any environment is suitable for the PRO QUICK PLUS SYSTEM. Install tile or stone of almost any type or size over the widest range of substrates – fast! **Strong, yet flexible, the PRO QUICK PLUS SYSTEM sets the standard by which all other setting materials are measured.**

Features

- ♦ FAST-SETTING: grout within 3–4 hours
- ♦ Permits light foot traffic after 4–6 hours following installation
- ♦ Combine with other PROMA products with Rapid-Cure Technology™ for the most time-critical installations
- ♦ For setting non-vitreous, semi-vitreous, vitreous and impervious ceramic and porcelain tiles, mosaics, pavers and quarry tiles
- ♦ For setting most marble, granite and natural stone (see LIMITATIONS)
- ♦ For installing interior/exterior brick veneer
- ♦ Use over the widest range of suitable substrates
- ♦ Install most types and sizes of tile and stone
- ♦ Use for interior, exterior, freeze/thaw, water-submerged, and other demanding installations such as pools, shopping malls, airports, etc.
- ♦ For institutional, industrial, commercial and residential floor and wall applications
- ♦ For use over a radiant floor heating system
- ♦ Exceeds ANSI A118.4F, ANSI A118.11 and ANSI A118.15F requirements
- ♦ Contributes to LEED® objectives and requirements



Packaging

The PRO QUICK PLUS SYSTEM is PRO QUICK SET (powder) + PRO QUICK PLUS (additive).

PRO QUICK SET: 11.34 (25 lb) plastic bag, grey;
22.7 kg (50 lb) plastic bag, grey; 22.7 kg (50 lb) bag, white

PRO QUICK PLUS : 7.5 L (2 gal) jug ; 20 L (5.3 gal) pail

Suitable Substrates

- ♦ Dry, completely cured concrete (at least 28 days old)
- ♦ Concrete and masonry blocks
- ♦ Cement backer units (CBU)
- ♦ Cementitious screeds, rendering, leveling coats and mortar beds
- ♦ PROMA's PRO MBR XD, waterproofing and PRO CBM 2, crack-isolation membranes
- ♦ Gypsum wallboard (INTERIOR dry areas only)
- ♦ Double layered EXTERIOR Grade Douglas Fir Plywood, certified CANPLY (SELECT) or (SEL-TF) CSA 121, minimum 32 mm (1 1/4") total thickness, for INTERIOR Residential Light duty floors and countertops, in dry areas only.
- ♦ Existing ceramic tiles (interior use only)*
- ♦ Cementitious Terrazzo floors*
- ♦ Old Cut-back adhesive residue*
- ♦ Existing VAT and VCT tiles, and non-cushioned vinyl sheet goods*

* With adequate prior preparation as indicated in PROMA's "SURFACE PREPARATION GUIDELINES"



Concrete

Exterior-Grade Plywood

Cutback Adhesive Residue

Existing VAT, VCT and Non-Cushioned Vinyl Sheet Goods

Existing Tile





Limitations

- Do not use at temperatures below 10°C (50°F) or above 35°C (95°F).
- Do not apply directly over particleboard, chipboard, presswood, Lauan, masonite, OSB, Gypsum-based leveling and patching compounds and all dimensionally unstable or non-recommended substrate materials.
- Do not use for the installation of green marble and other moisture sensitive stones that react to standard cement mortars and setting materials containing water. Instead, for setting these stones use **EXCLUSIVELY** PRO GROUT XTREME™ or PRO SEAL & SET™ 100 NS (see the respective technical data sheet for more details). For the installation of white, pastel or translucent marble, use PRO QUICK PLUS SYSTEM White.
- Do not use for installing glass tile with an epoxy finish backing and no synthetic mesh. For such installation, use instead PRO GROUT XTREME™ White (see respective technical data sheet).
- Do not use where high moisture and hydrostatic conditions and/or recurring moisture problems exist.
- When using the PRO QUICK PLUS SYSTEM over a radiant heating system (previously checked for good functioning), turn the system off 24 hours prior to the installation and wait at least 1 week before turning it back on.

4. TECHNICAL DATA

Applicable Standards

For Additional Information, please refer to the most recent TCNA handbook for ceramic tile installation or the TTMAC Specification Guide 09 30 00 Tile Installation Manual, or visit our website at www.proma.ca.

WORKING PROPERTIES (@23° C [73° F] and 50% RH)	
Pot life	> 45 minutes
Open time	≥ 20 minutes
Initial cure	45 minutes
Final cure	1 hr 30 minutes
Adjustability	35-45 minutes

PHYSICAL PROPERTIES (@23° C [73° F] and 50% RH)		
VOC content		
Summer formula (ideal for LEED projects)		0 g/L
Winter formula (ideal for freeze/thaw stability during transport)		75 g/L
Shear strength per ANSI A118.4 tests (at 28 days)		
Test	Specification	Results
Porcelain tiles	> 200 psi (1.38 MPa)	> 600 psi (4.14 MPa)
Quarry tile to quarry tile	> 150 psi (1.03 MPa)	> 450 psi (3.10 MPa)
Shear strength per ANSI A118.4 F tests (at 4 hours)		
Test	Specification	Results
Porcelain tiles	> 50 psi (0.34 MPa)	> 150 psi (1.03 MPa)
Shear strength per ANSI A118.11 tests (at 28 days)		
Test	Specification	Results
Quarry tile to plywood	> 150 psi (1.03 MPa)	≥ 350 psi (2.42 MPa)
Shear strength per ANSI A118.15 tests (at 28 days)		
Test	Specification	Results
Porcelain tiles	> 400 psi (2.76 MPa)	> 600 psi (4.14 MPa)
Quarry tile to quarry tile	> 150 psi (1.03 MPa)	> 450 psi (3.10 MPa)
Shear strength per ANSI A118.15 F tests (at 4 hours)		
Test	Specification	Results
Porcelain tiles	> 50 psi (0.34 MPa)	> 150 psi (1.03 MPa)
Approximate coverage per 22.7 kg (50 lb) bag		
Notched trowel		Coverage
6 x 6 x 6 mm (1/4" x 1/4" x 1/4")		80 ft² (7.5 m²)
6 x 10 x 6 mm (1/4" x 3/8" x 1/4")		65 ft² (6.0 m²)
19 x 16 x 8 mm (3/4" x 5/8" x 5/16") U		27 ft² (2.5 m²)
Shelf life – PRO QUICK PLUS		
12 months if kept in its original unopened packaging and stored in a dry location. Protect from freezing.		
Shelf life – PRO QUICK SET		
22.7 kg (50 lb) plastic bag, grey; 11.34 kg (25 lb) plastic bag, grey		12 months if kept in its original unopened packaging and stored in a dry location.
22.7 kg (50 lb) bag, white		6 months if kept in its original unopened packaging and stored in a dry location.





5. INSTALLATION

Surface Preparation

(Refer to PROMA Surface Preparation Guidelines for complete details)

Note: PRO SUPERPRIME 1C™ or PRO SUPERPRIME™ can be used to ready nearly any surface for PROMA setting materials without the need for scarifying or shotblasting, saving valuable time and money (see respective technical data sheet for details).

- ♦ All supporting surfaces must be structurally sound, solid, stable, level, plumb and true.
- ♦ Surfaces must be clean and free of dust, oil, grease, paint, tar, wax, curing agent, primer, sealer, form release agent or any deleterious substance and debris which may prevent or reduce adhesion.
- ♦ Acids, concentrated alkaline conditions and cleaning chemical residues must be neutralized or removed.
- ♦ All concrete substrates must be completely cured (at least 28 days old) and slightly textured.
- ♦ On grade or below grade concrete slabs must be installed over an effective vapor barrier.
- ♦ All concrete substrates must be dry and free of hydrostatic conditions and/or extreme moisture problems. Perform a calcium chloride moisture emission test (ASTM F-1869) on the concrete substrate before proceeding with the installation of the floor.
- ♦ Smooth concrete substrate surfaces must be either PRIMED with PRO SUPERPRIME or PRO SUPERPRIME 1C primer **OR** mechanically roughened in accordance with an engineer-approved procedure (shotblasting, scarification, grinding, sand or water-blasting, etc) to provide sufficient surface texture and profile for adequate bonding of the product.
- ♦ For ceramic and porcelain tiles up to 30 x 30 cm (12" x 12"), the structural design of the wood substrate must not allow a deflection greater than L/360 when tested to 136 kg (300 lb) concentrated loads in accordance with ASTM C627 Standard test method. For square and rectangular tiles with one edge dimension 38 cm (15") and 45 cm (18") up to 58 x 58 cm (23" x 23") the maximum deflection should not exceed L/540 unless an effective CIM (crack isolation membrane) is used in the installation system. **For tiles 60 x 60 cm (24" x 24") or larger and for ALL dimension stone installation, the maximum deflection must not exceed L/720.**

Note: Do not overheat floors or basement during cold season construction. These conditions could cause the product to cure too rapidly and affect its performance.

Mixing

1. Use clean mixing-tools and containers.
2. In a clean mixing container, measure and pour **7.5 L [2 US gal]** of **PRO QUICK PLUS additive** and gradually add 22.7 kg (50 lb) of PRO QUICK SET powder mix, while mixing slowly.
3. Using a low-speed mechanical mixer (150 - 300 rpm), mix until a homogeneous, smooth, lump-free, consistency is achieved.
4. The product is now ready for setting.
5. During the setting, keep the mortar-mix fresh & smooth by periodically re-stirring the content inside the bucket without ever adding water.
6. Clean tools and hands with water while the mortar is still fresh.

Application

1. Pressure-apply the mortar with the flat edge of the recommended notched-trowel to promote a positive bond and completely cover the substrate.
2. **IMMEDIATELY AS YOU GO** (without delay) and before skinning or drying occurs, apply a sufficient mortar layer and, using the notched side of the trowel, ridge in a straight-line directional pattern to achieve an even setting bed. For walls, maintain ridges running in a horizontal directional pattern.
3. Do not spread more mortar than can be covered with tiles within 10 minutes.
4. If the mortar dries or skins-over, it must be removed and replaced with fresh mortar.
5. Place tiles firmly with a slight back and forth motion across ridges and tamp tiles repeatedly to achieve at least an 85% mortar contact with the tile back (95% in wet areas, commercial floors and exterior installations and, 100% for natural stone installation).
6. Tiles should be embedded in the mortar to at least 1/3 of their thickness.
7. Remove excess mortar from grout space and wipe-off blotches and smears immediately while mortar is fresh.

Expansion and Control Joints

- ♦ Install control joints where tiles abut restraining surfaces, around the perimeter of the work and at the base of columns and curbs.
- ♦ Install and space expansion and control joints in all directions in accordance with TCNA HANDBOOK FOR CERAMIC TILE INSTALLATION Detail #EJ-171 recommendations, or TTMAC Specification Guide 09 30 00 Detail #301-MJ recommendations. CAUTION: DO NOT cut EXPANSION JOINTS in after the tiles have been installed. Install tiles normally and stop when the control joint location is reached. Cut the tile if required and resume setting from the opposite side of the joint. Before proceeding further, rake the joint and leave the tile and joint space clean.
- ♦ DO NOT FILL EXPANSION JOINT SPACE UNTIL GROUTING IS COMPLETED on the remainder of the job.
- ♦ Install a suitable industry-approved compressible bead and flexible sealant to caulk expansion and control joints. Follow the sealant manufacturer's installation instructions.

Curing and Grouting

- ♦ Do not step on floors and protect area from foot traffic for at least 4-6 hours, depending on temperatures and humidity conditions.
- ♦ Protect walls from water contact, impact and vibration for at least 24 hours.
- ♦ Allow at least 3-4 hours from installation before grouting tiles.
- ♦ Protect all new installation from weather and freezing for at least 7 days.

Note: Extended protection and downtime requirements before grouting may be required depending on temperature and humidity conditions and on the porosity and size of the tile or stone being installed.

Cleaning

Clean tools and hands with water while the product is still fresh.

Health and Safety

Refer to the Safety Data Sheet (SDS) for complete details.

6. AVAILABILITY AND COST

PROMA products are widely available in Canada and the Northeast United States. To find a distributor of PROMA products, call **toll-free: 1.866.51.PROMA (77662)**.

7. WARRANTY

PROMA warrants that this product is manufactured using quality raw materials and is of merchantable quality and suitable for the purpose for which it was intended. PROMA's liability under this warranty shall be limited to the replacement of its product proven to be defective. Neither seller nor manufacturer shall be liable for any injury, loss or damage, direct or consequential, arising from the use of/or the inability to use this product.

8. MAINTENANCE

Product requires no special maintenance. Do not leave without floor covering or exposed as a resurfacing material.

9. TECHNICAL SERVICE

For more detailed information on this product, please contact our technical department for proper recommendations and job field assistance. **Toll-free: 1.866.51.PROMA (77662)**.

10. FILING SYSTEM

Additional information is available upon request, or by visiting www.proma.ca.



PROMA Adhesives Inc.

9801, Parkway, Anjou, Quebec Canada H1J 1P3

Tel.: 514.852.8585

Fax: 514.852.8225

Toll-free: 1 866.51.PROMA (77662)

Email: info@proma.ca

© 2020 PROMA Adhesives, Inc.

