



PRO GROUT™ U UNSANDED

2. MANUFACTURER

PROMA Adhesives Inc.

9801, Parkway, Anjou, Quebec Canada H1J 1P3

Tel.: 514.852.8585

Fax: 514.852.8225

Toll-free: 1 866.51.PROMA (77662)

Email: info@proma.ca

Web: www.proma.ca

3. PRODUCT DESCRIPTION

PRO GROUT™ U (UNSANDED) is a high-quality, **scratch-free** polymer-modified, unsanded cement grout that, when mixed with water, provides excellent color consistency and exceptional durability. PRO GROUT U (UNSANDED) is creamier, more uniform and easier to spread than most conventional grouts.

Features

- ♦ Use for joints 2 mm (1/16") to 3 mm (1/8")
- ♦ Comes in all PROMA colors
- ♦ Scratch-free – no sand or silica in mix
- ♦ Super smooth consistency
- ♦ Excellent color consistency
- ♦ Easy to use and clean
- ♦ Mixed with PRO GROUT PLUS additive, provides resistance against water and oil-based stains, dirt and grime
- ♦ For interior institutional, commercial and residential floor and wall tile grouting
- ♦ For grouting most types of ceramic and porcelain tiles, glass tiles, quarry tiles, pavers, natural and engineered dimension stones, granite, slate and marble
- ♦ Will not promote mold, mildew or bacteria growth
- ♦ No VOC
- ♦ Meets or exceeds ANSI A118.6 and/or ANSI 118.7 requirements
- ♦ Contributes to LEED® objectives and requirements

Packaging

2 kg (4.4 lb) box; 5 kg (11 lb) box; 10 kg (22 lb) bag

Limitations

- ♦ Do not use for grouting joints more than 1/8" (3 mm) wide [Use PRO GROUT™ S (SANDED) or PRO TOPGROUT™ instead].
- ♦ Do not use for grouting when chemical, stain and impact resistance is required or for heavy-duty industrial floors. Use PRO GROUT XTREME instead (refer to respective technical data sheet for more information).
- ♦ Do not use when surface and ambient temperatures are below 10°C (50°F) or above 35° C (95°F).
- ♦ **"Caution":** Generally, white grout is best suited for grouting white or light colored marble or granite. Certain highly absorptive tiles (such as Saltillo, adobe, terracotta, etc) or tiles with surface porosity, rough textured surface and certain types of porcelain tiles may require sealing prior to grouting to prevent staining. Test a small area first, taking all the necessary precautions; apply, where required, an appropriate grout release (such as PROMA's PRO GROUT EASE - refer to technical data sheet for more details) to prevent grout staining. Follow the tile or stone manufacturer's instructions and recommendations.



When mixed with
PRO GROUT PLUS



- ♦ **Efflorescence**, a crystalline deposit that sometimes appears over cement grout as a whitish powder or crust, can occur with any ordinary cement-based product.
- ♦ **Color variations** can occur in any ordinary cement product including grout due to normal slight variations in the product from different batch lot numbers, differing tile types, tile porosity, jobsite and environmental conditions, application and cleaning techniques. Shading, fading and color variations can be minimized by dry pre-blending all the contents from several grout bags or containers together before mixing with water, by proceeding in strict accordance with product instructions and by cleaning with as little water as possible.
- ♦ Avoid acid or chemical cleaning.





4. TECHNICAL DATA

Applicable Standards

For Additional Information, please refer to the most recent TCNA handbook for ceramic tile installation or the TTMAC Specification Guide 09 30 00 Tile Installation Manual, or visit our website at www.proma.ca.

WORKING PROPERTIES (@23° C [73° F] and 50% RH)	
Pot life	> 1 hour
Lead time prior initial clean up	15-30 minutes
Lead time prior to light traffic	12-24 hours
Lead time prior to heavy traffic	72 hours
Lead time prior to water immersion	21 days
Lead time prior to sealing	21 days

PHYSICAL PROPERTIES (@23° C [73° F] and 50% RH)	
VOC content	0 g/L
Density (paste)	1.8 g/mL
PH	11-13
Compressive strength @ 28 days as per ANSI A118.6/A118.7	
ANSI requirements	Results
> 3000 PSI (21 MPa)	> 4500 PSI (31 MPa)
Linear shrinkage @ 27 days as per ANSI A118.6/A118.7	
ANSI requirements	Results
< 0.3%	0.25%
Water absorption (%) as per ANSI A118.6	
ANSI requirements	Results
< 18%	< 15%
Approximate coverage	
Visit our web site www.proma.ca and refer to our GROUT CALCULATOR to help determine the approximate amount of grout needed for any sized job.	
Shelf life	
12 months if kept in its original unopened packaging and stored in a dry location.	

5. INSTALLATION

Surface Preparation

- Tiles must be firmly secured to a sound solid non-deflecting substrate in accordance with the appropriate ANSI A108 Standard recommendations.
- The setting mortar or adhesive must be cured and dry in accordance with the "Prior to grouting" product instruction requirements.
- Remove all spacers, pegs or ropes.
- Vacuum and clean tile surfaces thoroughly to remove all contaminants.
- Joint spaces should be uniform in depth and width and free of excess mortar, dust, dirt, free water and debris.
- Pre-seal tile or stone that can be subject to staining; follow the tile or stone manufacturer's instructions and recommendations. Use PROMA's PRO GROUT EASE product prior to grouting (see respective technical data sheet for more details).

Mixing

Mixing Ratio: 2 1/2 parts powder to 1 part water (by volume)

1. For best results, the same designated person should mix all of the grout.
2. To minimize shading and color variation and to achieve uniform pigment and aggregate dispersion, especially when using several bags or containers from different batch numbers, dry-blend all the powder contents of the bags or containers together before mixing with water.
3. Use clean mixing containers and tools.
4. In the mixing container, measure and pour clean cool water and gradually add PRO GROUT U (UNSANDED) powder mix, while mixing slowly, using the following approximate ratios:

Water	PRO GROUT U (UNSANDED)
660 mL (22.3 US fl oz)	2 kg (4.4 lb) box
1.65 L (0.44 US gal, 1.74 US quarts)	5 kg (11 lb) box
3.3 L (0.87 US gal, 3.5 US quarts)	10 kg (22 lb) bag
5. For better color uniformity, use a measuring container to better control and maintain the same constant proportion of water and grout powder that are mixed. Consistency in the process and in the water/powder ratio in batch to batch mixing is paramount to achieving professional results.
6. Mix thoroughly, preferably with a low-speed mixer (max. 450 RPM) until a homogeneous, easy-spread consistency is achieved. Avoid prolonged mixing or air entrapment which may shorten the pot life and cause premature drying, pin-holing and excessive shrinkage.
7. Let the mixture sit still (slake) for about 5 minutes and re-mix without adding any water or powder. Re-mix grout periodically while spreading without ever adding water. An excess amount of water used for mixing or cleaning causes weakening, shrinkage, efflorescence and color variation of the grouted joints.

Note: Use PRO GROUT PLUS to obtain stain resistant grout against water and oil-based stains, dirt and grime.

Application

Note: Installation procedure should conform to ANSI A108.10 Standard recommendations.

1. Lightly dampen absorptive, highly porous tile or stone with clean, cool water but leave no standing water in the open joint space or use PROMA's PRO GROUT EASE product (see respective technical data sheet for more details).
2. With a firm sharp-edge rubber float held at a 45° angle, force grout diagonally into the joint, ensuring that the grout is well-compacted, free of voids and pin holes, and filled flush with the tile or stone edge.
3. Remove excess grout through successive diagonal passes using the edge of the rubber float held at a sharp 90° angle.
4. Allow grout to harden sufficiently to sustain only slight finger-nail indentation when pressed hard or approximately 15 to 30 minutes depending on the type of tile or stone and ambient temperature and humidity conditions.
5. Use as little water as possible for cleaning up grout. An excess amount of water used for mixing or cleaning causes weakening, shrinkage, efflorescence, pin holes and color variation of the grouted joints.
6. Smooth and level joints and remove excess grout from tile or stone with a slightly damp (NOT WET) soft close pore cellulose sponge, wiping lightly and delicately in diagonal strokes. Change water and rinse sponge frequently. Keeping the water and sponge clean will achieve better joint color uniformity.
7. Wait at least 2 to 3 hours before removing the final haze from the tile or stone surface with a soft dry white or neutral cloth. [Removal of the dry grout haze from unglazed or unpolished stone surfaces can also be successfully achieved by using a white (fine grain) nylon scouring pad]. DO NOT ACID WASH.

Note: All expansion and control joints must be carried through from substrate to final flooring and filled with an industry-approved flexible sealant, such as PRO COLOR SEAL™ ULTRA, in accordance with ANSI A108.01 norm and TCNA detail EJ171 or TTMAC detail 301MJ. Do not fill or cover expansion and control joints with installation material. Contact PROMA's technical department for additional information.





Curing and Protection

- ♦ Grout must be fully cured before regular cleaning.
- ♦ Floors: Protect floors from foot traffic for at least 24 hours and from heavy commercial or industrial traffic for at least 72 hours.
- ♦ Walls: Protect walls from impact and vibration for at least 24-72 hours (or as required by the setting mortar or adhesive instructions).
- ♦ Showers: For residential showers or tub surrounds, wait 24-48 hours after grouting.
- ♦ Temperature and humidity conditions affect the curing of all cement-based products. Allow for extended curing and protection periods at lowering temperatures under 15°C (60°F) and/or when the ambient relative humidity is higher than 70%.

Cleaning

Clean tools and hands with water while the product is still fresh.

Health and Safety

Refer to the Safety Data Sheet (SDS) for complete details.

6. AVAILABILITY AND COST

PROMA products are widely available in Canada and the Northeast United States. To find a distributor of PROMA products, call **toll-free: 1.866.51.PROMA (77662)**.

7. WARRANTY

PROMA warrants that this product is manufactured using quality raw materials and is of merchantable quality and suitable for the purpose for which it was intended. PROMA's liability under this warranty shall be limited to the replacement of its product proven to be defective. Neither seller nor manufacturer shall be liable for any injury, loss or damage, direct or consequential, arising from the use of/or the inability to use this product.

8. MAINTENANCE

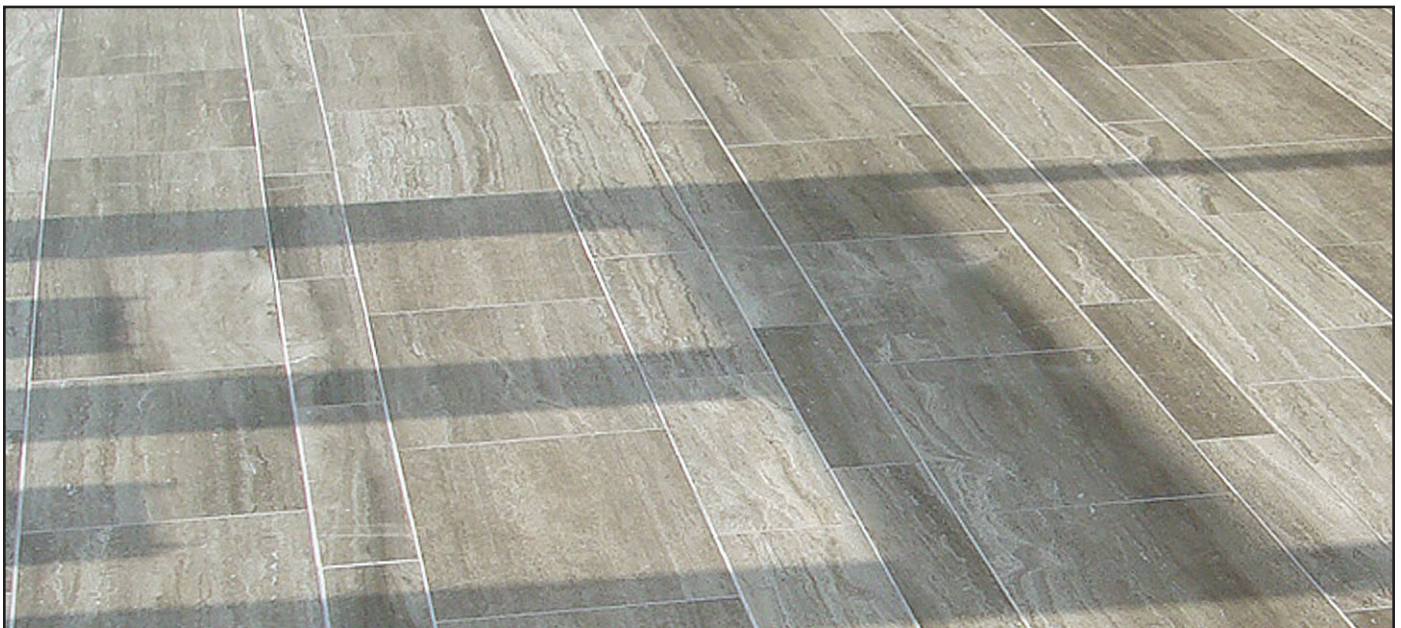
Product requires no special maintenance.

9. TECHNICAL SERVICE

For more detailed information on this product, please contact our technical department for proper recommendations and job field assistance. **Toll-free: 1.866.51.PROMA (77662)**.

10. FILING SYSTEM

Additional information is available upon request, or by visiting **www.proma.ca**.





PROMA Adhesives Inc.

9801, Parkway, Anjou, Quebec Canada H1J 1P3

Tel.: 514.852.8585

Fax: 514.852.8225

Toll-free: 1 866.51.PROMA (77662)

Email: info@proma.ca

© 2024 PROMA Adhesives, Inc.