



# PRO GROUT™ ONE LUMINANCE – CRYSTAL

## 2. MANUFACTURER

### PROMA Adhesives Inc.

9801, Parkway, Anjou, Quebec Canada H1J 1P3

Tel.: 514.852.8585

Fax: 514.852.8225

Toll-free: 1 866.51.PROMA (77662)

Email: info@proma.ca

Web: www.proma.ca

## 3. PRODUCT DESCRIPTION

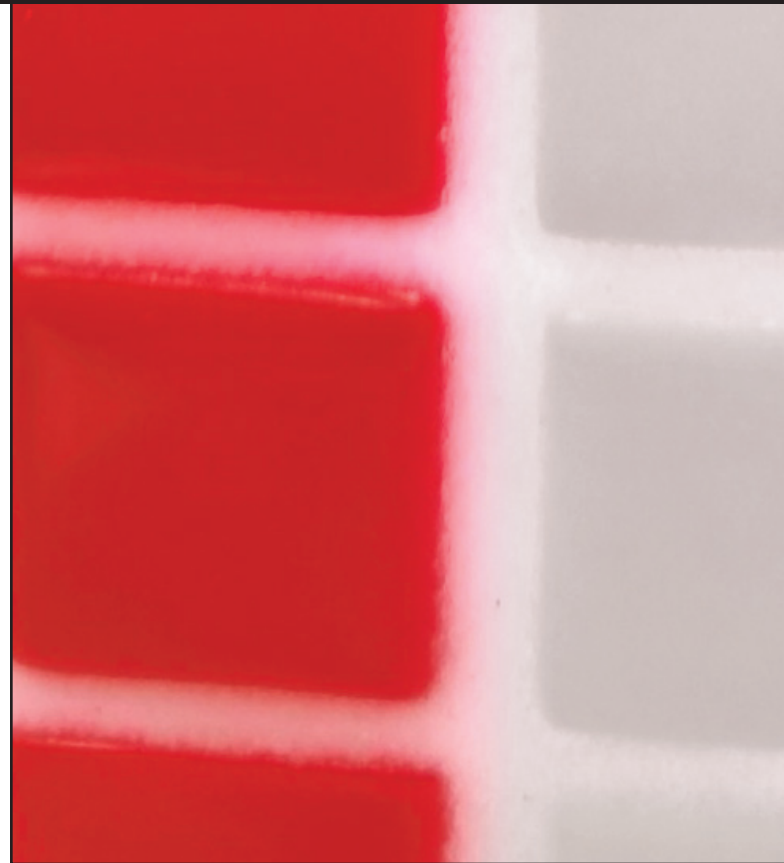
PRO GROUT™ ONE LUMINANCE is an advanced professional-grade, ready-to-use premixed grout with Smart Color Technology™, which produces a translucent chameleon effect that blends with the color of tile. PRO GROUT™ ONE LUMINANCE can also be used to install mosaic tile sheets up to 300 x 300 mm (12" x 12") on floors and walls (refer to technical data sheet for more information).

### Features

- ◆ Translucent grout with Smart Color™ Technology
- ◆ Extremely easy to use and clean
- ◆ 70%+ recycled content
- ◆ Ready-to-use
- ◆ Use for 2 mm (1/16") to 13 mm (1/2") joints
- ◆ Ideal for setting/grouting glass tiles
- ◆ Scratch free!
- ◆ Ultra-smooth consistency
- ◆ Will not stain tile or stones
- ◆ No sealing required!
- ◆ Durable and crack resistant
- ◆ Excellent stain resistance
- ◆ Better coverage / zero waste
- ◆ Acid resistant
- ◆ Efflorescence-free!
- ◆ Exceptional sag-free properties
- ◆ Flexible and elastic
- ◆ Freeze/thaw stable – heated transport or storage not required down to -20°C (-4°F)
- ◆ For interior and exterior residential and commercial floor and wall tile grouting
- ◆ For grouting most types of ceramic and porcelain tiles, quarry tiles, pavers, natural and engineered dimension stones, granite, slate, glass tiles, luxury vinyl tile and cement-based terrazzo
- ◆ Good performance in intermittent wet areas, such as showers, tub surrounds, countertops and backsplashes
- ◆ Will prevent mold, mildew or bacteria growth
- ◆ Low VOC
- ◆ Contributes to LEED® objectives and requirements

### Packaging

3.79 L (1 US gal) pail ; 1.89 L (0.5 US gal) pail



### Suitable Substrates

#### ADHESIVE

- ◆ Dry, completely cured concrete (at least 28 days old)
- ◆ Concrete and masonry blocks
- ◆ Cement backer units (CBU)
- ◆ Cementitious screeds, rendering, leveling coats and mortar beds
- ◆ Gypsum wallboard (INTERIOR dry areas only)
- ◆ Double layered Exterior Grade Douglas Fir Plywood, certified CANPLY (SELECT) or (SEL-TF) CSA 121, minimum 32 mm (1 1/4") total thickness, for INTERIOR Residential Light-duty Floors and countertops, in dry areas only
- ◆ Plexiglass



### Limitations

#### ADHESIVE

- ◆ Use only for installing mosaic tile sheets up to 300 mm x 300mm (12" x12") on floors and walls.
- ◆ Do not use at temperatures below 10°C (50°F) or above 35°C (95°F).
- ◆ Do not apply directly over particleboard, chipboard, presswood, Luan, masonite, OSB, Gypsum-based leveling and patching compounds and all dimensionally unstable or non-recommended substrate materials such as metal or epoxy-resin floors.
- ◆ Do not use for the installation of green marble and other moisture sensitive stones that react to standard cement mortars and setting materials containing water. Instead, for setting these stones, use EXCLUSIVELY PRO GROUT XTREME™ or PRO SEAL & SET™ 100 NS (see respective technical data sheet). For the installation of white, pastel or translucent marble, use instead a WHITE polymer-modified thin-set mortar, such as PRO SUPERLITE MORTAR™.



**Limitations (continued)**

**ADHESIVE**

- Do not use for installing glass tile with an epoxy finish backing and no synthetic mesh. For such installation, use instead PRO GROUT XTREME White or PRO SEAL & SET™ 100 NS (see respective technical data sheet).
- Do not use for installing impervious porcelain or low absorption ceramic tiles over an existing ceramic tile or other impervious substrates such as PROMA's PRO MBR XD waterproofing or PROMA's PRO CBM 2 crack isolation membranes.
- Do not use for installations submitted to prolonged water contact, immersion or high humidity level (e.g. pools, shower floors, fountains, steam rooms, spas, etc.) In such cases, set tiles with a mixture of PRO BOND and PRO BOND PLUS additive, or PRO QUICK and PRO QUICK PLUS additive, or PRO HPX™ (see respective technical data sheets for details).
- Do not use to install heating mats.
- Do not use where high moisture and hydrostatic conditions and/or recurring moisture problems exist.

**GROUT**

- Do not use for grouting when harsh chemical resistance is required or for heavy-duty industrial floors. Use PRO GROUT XTREME™ instead (refer to technical data sheet for more information).
- Do not use when surface and ambient temperatures are below 10°C (50°F) or above 35°C (95°F) or for exterior grouting when rain is expected within 24 hours on inclined wall or 72 hours over horizontal floor.
- Follow the tile or stone manufacturer's instructions and recommendations.
- Do not use in steam rooms or in submerged applications, such as water basins, fountains or pools.
- Avoid chemical and steam cleaning.
- Do not use in an environment exposed to excessive and continuous high surface temperatures (≥ 65°C [149°F]).
- Do not apply or install over expansion and control joints.

**4. TECHNICAL DATA**

**Applicable Standards**

For Additional Information, please refer to the most recent TCNA handbook for ceramic tile installation or the TTMAC Specification Guide 09 30 00 Tile Installation Manual, or visit our website at [www.proma.ca](http://www.proma.ca).

| <b>WORKING PROPERTIES</b> (@23° C [73° F] and 50% RH) |                  |
|---|------------------|
| <b>Lead time prior to initial clean up</b>            | Up to 30 minutes |
| <b>Cleanability (ANSI 118.3)</b>                      | Exceeds          |
| <b>Joint sag resistance (ANSI 118.3)</b>              | Exceeds          |
| <b>Final set (ASTM C266)</b>                          | < 24 hours       |
| <b>Lead time prior to heavy traffic</b>               | 7 days           |
| <b>Lead time prior to water exposure</b>              | 2 days           |
| <b>Lead time prior to stain resistance</b>            | 3 days           |
| <b>Lead time prior to light foot traffic</b>          | 24 hours         |

| <b>PHYSICAL PROPERTIES</b> (@23° C [73° F] and 50% RH)  |  |                        |                        |                        |                        |                       |
|---|--|------------------------|------------------------|------------------------|------------------------|-----------------------|
| <b>VOC content</b>  | 49 g/L                                   |                        |                        |                        |                        |                       |
| <b>Density</b>  | 1.7 g/mL                                 |                        |                        |                        |                        |                       |
| <b>pH</b>   | 7 to 9                                   |                        |                        |                        |                        |                       |
| <b>Odor</b>   | Low                                      |                        |                        |                        |                        |                       |
| <b>Freeze/thaw stability</b>  | Passes 5 cycles down to -20°C (-4°F)     |                        |                        |                        |                        |                       |
| <b>Approximate coverage per 3.79 L (1 US gal) pail</b>  |  |                        |                        |                        |                        |                       |
| <b>ADHESIVE</b>   |  |                        |                        |                        |                        |                       |
| <b>Notched trowel</b>   | <b>Coverage</b>                          |                        |                        |                        |                        |                       |
| 4.4 mm x 4.4 mm (11/32" x 11/32") squared-notch   | 3.3 m <sup>2</sup> (36 ft <sup>2</sup> ) |                        |                        |                        |                        |                       |
| 4.5 mm x 4.5 mm (3/16" x 3/16") v-notch   | 3.1 m <sup>2</sup> (33 ft <sup>2</sup> ) |                        |                        |                        |                        |                       |
| 6.4 mm x 6.4 mm (1/4" x 1/4") squared-notch   | 2.3 m <sup>2</sup> (25 ft <sup>2</sup> ) |                        |                        |                        |                        |                       |
| <b>GROUT</b>  |  |                        |                        |                        |                        |                       |
| <b>Tile dimension</b>   | <b>Joint width</b>                       |                        |                        |                        |                        |                       |
|   | <b>1.5 mm (1/16")</b>                    | <b>3 mm (1/8")</b>     | <b>5 mm (3/16")</b>    | <b>6 mm (1/4")</b>     | <b>10 mm (3/8")</b>    | <b>13 mm (1/2")</b>   |
| 25 x 25 x 6 mm  | 5.2 m <sup>2</sup>                       | 2.9 m <sup>2</sup>     | 2.1 m <sup>2</sup>     | 1.7 m <sup>2</sup>     | 1.3 m <sup>2</sup>     | 1.1 m <sup>2</sup>    |
| 1" x 1" x 1/4"  | (56 ft <sup>2</sup> )                    | (31 ft <sup>2</sup> )  | (22 ft <sup>2</sup> )  | (18 ft <sup>2</sup> )  | (14 ft <sup>2</sup> )  | (12 ft <sup>2</sup> ) |
| 51 x 51 x 6 mm  | 10.0 m <sup>2</sup>                      | 5.2 m <sup>2</sup>     | 3.6 m <sup>2</sup>     | 2.9 m <sup>2</sup>     | 2.1 m <sup>2</sup>     | 1.7 m <sup>2</sup>    |
| 2" x 2" x 1/4"  | (108 ft <sup>2</sup> )                   | (56 ft <sup>2</sup> )  | (39 ft <sup>2</sup> )  | (31 ft <sup>2</sup> )  | (22 ft <sup>2</sup> )  | (18 ft <sup>2</sup> ) |
| 152 x 152 x 6 mm  | 29.2 m <sup>2</sup>                      | 14.8 m <sup>2</sup>    | 10.0 m <sup>2</sup>    | 7.6 m <sup>2</sup>     | 5.6 m <sup>2</sup>     | 4.0 m <sup>2</sup>    |
| 6" x 6" x 1/4"  | (316 ft <sup>2</sup> )                   | (160 ft <sup>2</sup> ) | (108 ft <sup>2</sup> ) | (82 ft <sup>2</sup> )  | (52 ft <sup>2</sup> )  | (44 ft <sup>2</sup> ) |
| 203 x 203 x 10 mm   | 25.8 m <sup>2</sup>                      | 13.1 m <sup>2</sup>    | 8.8 m <sup>2</sup>     | 6.7 m <sup>2</sup>     | 4.6 m <sup>2</sup>     | 3.5 m <sup>2</sup>    |
| 8" x 8" x 3/8"  | (279 ft <sup>2</sup> )                   | (140 ft <sup>2</sup> ) | (95 ft <sup>2</sup> )  | (72 ft <sup>2</sup> )  | (49 ft <sup>2</sup> )  | (38 ft <sup>2</sup> ) |
| 305 x 305 x 10 mm   | 38.6 m <sup>2</sup>                      | 19.4 m <sup>2</sup>    | 13.1 m <sup>2</sup>    | 9.9 m <sup>2</sup>     | 6.7 m <sup>2</sup>     | 5.1 m <sup>2</sup>    |
| 12" x 12" x 3/8"  | (415 ft <sup>2</sup> )                   | (210 ft <sup>2</sup> ) | (140 ft <sup>2</sup> ) | (106 ft <sup>2</sup> ) | (72 ft <sup>2</sup> )  | (55 ft <sup>2</sup> ) |
| 457 x 457 x 10 mm   | 57.7 m <sup>2</sup>                      | 29.0 m <sup>2</sup>    | 19.4 m <sup>2</sup>    | 14.7 m <sup>2</sup>    | 9.9 m <sup>2</sup>     | 7.5 m <sup>2</sup>    |
| 18" x 18" x 3/8"  | (623 ft <sup>2</sup> )                   | (312 ft <sup>2</sup> ) | (210 ft <sup>2</sup> ) | (158 ft <sup>2</sup> ) | (106 ft <sup>2</sup> ) | (81 ft <sup>2</sup> ) |
| 610 x 152 x 10 mm   | 31.0 m <sup>2</sup>                      | 15.7 m <sup>2</sup>    | 10.5 m <sup>2</sup>    | 8.0 m <sup>2</sup>     | 5.4 m <sup>2</sup>     | 4.2 m <sup>2</sup>    |
| 24" x 6" x 3/8"   | (332 ft <sup>2</sup> )                   | (168 ft <sup>2</sup> ) | (114 ft <sup>2</sup> ) | (86 ft <sup>2</sup> )  | (59 ft <sup>2</sup> )  | (45 ft <sup>2</sup> ) |
| 610 x 305 x 10 mm   | 51.4 m <sup>2</sup>                      | 25.8 m <sup>2</sup>    | 17.3 m <sup>2</sup>    | 13.1 m <sup>2</sup>    | 8.8 m <sup>2</sup>     | 6.7 m <sup>2</sup>    |
| 24" x 12" x 3/8"  | (552 ft <sup>2</sup> )                   | (279 ft <sup>2</sup> ) | (186 ft <sup>2</sup> ) | (140 ft <sup>2</sup> ) | (95 ft <sup>2</sup> )  | (72 ft <sup>2</sup> ) |
| <i>USE OUR ONLINE GROUT CALCULATOR FOR APPROXIMATE GROUT COVERAGE ON ALL OTHER TILE DIMENSIONS.</i> |  |                        |                        |                        |                        |                       |
| <b>Shelf life</b>   |  |                        |                        |                        |                        |                       |
| 24 months if kept in its original unopened packaging and stored in a dry location.                  |  |                        |                        |                        |                        |                       |

**5. INSTALLATION**

**Surface Preparation**

**ADHESIVE**

**Note:** PRO GROUT™ ONE LUMINANCE is a water-based product that, when used as an adhesive, requires at least one porous surface, either the substrate or the tile, to develop its adhesion. In doubt, perform a test over a small area prior to application to check for proper adhesion

- All supporting surfaces must be structurally sound, solid, stable, plumb, level and true to a maximum variation of 1/4" in 10'-0" (6 mm in 3 m) from the required plane and no more than 1/16" in 12" (2 mm in 305 mm) when measured from the high points in the surface in accordance with ANSI A108.01 Specifications requirements.
- Surfaces must be clean and free of dust, oil, grease, paint, tar, wax, curing agent, primer, sealer, form release agent or any deleterious substance and debris which may prevent or reduce adhesion.
- Acids, concentrated alkaline conditions and cleaning chemical residues must be neutralized or removed.
- All concrete substrates must be completely cured (at least 28 days old) and accept water penetration.



- ◆ On grade or below grade concrete slabs must be installed over an effective vapor barrier.
- ◆ All concrete substrates must be dry and free of hydrostatic conditions and/or extreme moisture problems. Perform a calcium chloride moisture emission test (ASTM F-1869) on the concrete substrate before proceeding with the installation of the floor.

### GROUT

- ◆ Setting mortar or adhesive must be properly cured and dry in accordance to the installation product's instructions.
- ◆ Remove all spacers, pegs or ropes.
- ◆ Vacuum and clean surfaces thoroughly to remove dust and dirt.
- ◆ Joint spaces should be uniform in depth and width and free of excess mortar, dust, dirt, free water and debris.

### Mixing

No mixing required. PRO GROUT™ ONE LUMINANCE comes in a ready-to-use pail.

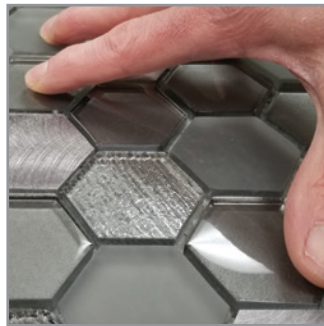
### Application

#### ADHESIVE

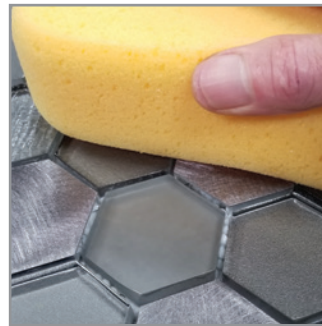
1. Select a trowel size to obtain a minimum coverage of 90%.
2. Apply an adhesive layer using the notched side of the trowel ridge in a straight-line directional pattern to achieve an even spread. For walls, maintain ridges running in a horizontal directional pattern.
3. Do not spread more adhesive than can be covered with tiles within 20-40 minutes (or 2-3 m<sup>2</sup> [20-32 ft<sup>2</sup>]).
4. If the adhesive dries or skins-over, it must be removed and replaced with fresh adhesive.
5. Place tiles firmly with a slight back and forth motion across ridges and tamp tiles repeatedly to achieve at least 90% adhesive contact with the tile back.
6. Tiles should be embedded in the adhesive to a maximum of 1/3 of their thickness to allow sufficient grouting volume.
7. Do not use more material than required for quickest strength development and full cure.



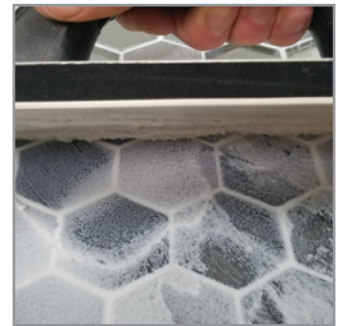
Apply an adhesive layer using the notched side of the trowel ridge in a straight-line directional pattern to achieve an even spread. For walls, maintain ridges running in a horizontal directional pattern.



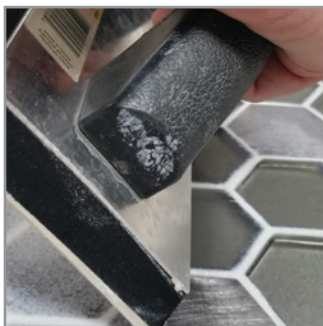
Place tiles firmly with a slight back and forth motion across ridges and tamp tiles repeatedly to achieve at least 90% adhesive contact with the tile back.



Slightly moisten tile surface with a damp sponge just before application to help with spreading the grout.



With a firm to medium sharp-edged rubber float, force grout diagonally into the joint at a 45° angle, ensuring that the grout is well-compacted, free of voids and pin holes, and filled flush with the tile or stone edge.



Remove excess grout through successive diagonal passes using the edge of the rubber float held at a sharp 90° angle.



Allow grout to harden for about 20 to 30 minutes. Using a slightly dampened white scrubbing pad, loosen up all excess grout over the tile with a circular motion. Do not add water before everything is well loosened up.



Then, using a slightly dampened sponge (not wet), gently wipe excess material from the surface using light and delicate diagonal passes. Change water and rinse the sponge frequently. Keeping the water and sponge clean will achieve better joint color uniformity.



Wait at least 15-30 minutes before removing the final haze from the tile or stone surface with a slightly dampened sponge or a microfiber towel.

**Important:** Do not let water sit on top of grout joints as it will interfere with the final clean up and curing, thus causing poor results.



## GROUT

**Notes:** Installation procedure should conform to ANSI A108.10, item 4.0 and 5.3, Standard recommendations.

1. Slightly moisten tile surface with a damp sponge just before application to help with spreading the grout.
2. With a firm to medium sharp-edged rubber float, force grout diagonally into the joint at a 45° angle, ensuring that the grout is well-compacted, free of voids and pin holes, and filled flush with the tile or stone edge.
3. Remove excess grout through successive diagonal passes using the edge of the rubber float held at a sharp 90° angle.
4. Clean up:
  - Allow grout to harden for about 20 to 30 minutes. Using a slightly dampened white scrubbing pad, loosen up all excess grout over the tile with a circular motion. Do not add water before everything is well loosened up.
  - Then, using a slightly dampened sponge (not wet), gently wipe excess material from the surface using light and delicate diagonal passes. Change water and rinse the sponge frequently. Keeping the water and sponge clean will achieve better joint color uniformity.
  - Wait at least 15-30 minutes before removing the final haze from the tile or stone surface with a slightly dampened sponge or a microfiber towel.

**Important:** Do not let water sit on top of grout joints as it will interfere with the final clean up and curing, thus causing poor results.

**Notes:** After 24 hours, cleanup becomes very difficult. If a light haze remains, it may still be removed using a white scrub pad or microfiber towel and a household window cleaner, such as Windex®. Carefully avoid contaminating the grout joints.

PRO GROUT™ ONE LUMINANCE can be reapplied after 24 hours in places where grout joints may not appear flush. The product will bond to the first coat.

## Expansion and Control Joints

- ♦ Install control joints where tiles abut restraining surfaces, around the perimeter of the work and at the base of columns and curbs.
- ♦ Install and space expansion and control joints in all directions in accordance with TCNA HANDBOOK FOR CERAMIC TILE INSTALLATION Detail #EJ-171 recommendations, or TTMAC Specification Guide 09 30 00 Detail #301-MJ recommendations. CAUTION: DO NOT cut EXPANSION JOINTS in after the tiles have been installed. Install tiles normally and stop when the control joint location is reached. Cut the tile if required and resume setting from the opposite side of the joint. Before proceeding further, rake the joint and leave the tile and joint space clean.
- ♦ DO NOT FILL EXPANSION JOINT SPACE UNTIL GROUTING IS COMPLETED on the remainder of the job.
- ♦ Install a suitable industry-approved compressible bead and flexible sealant to caulk expansion and control joints. Follow the sealant manufacturer's installation instructions.

## Curing and Protection

- ♦ Allow at least 24 hours from installation before grouting tiles.
- ♦ **Floors:** Protect floors from foot traffic for at least 24 hours and from heavy commercial or industrial traffic for at least 7 days after grouting.
- ♦ **Walls:** Protect walls from impact and vibration for at least 24 hours after grouting (or as required per instructions if using a separate setting mortar or adhesive).
- ♦ **Showers and tub surrounds:** Wait 3 days after grouting before water exposure.
- ♦ **Lead time prior to stain resistance:** 3 days.

**Note:** PRO GROUT™ ONE LUMINANCE will cure faster in low-humidity conditions (less than 50% RH) or high temperature. Drying times will vary based on tile sizes being installed, substrate porosity level and flooring backing when used as an adhesive.

## Cleaning

Clean tools and hands with water while the product is still fresh.

## Health and Safety

Refer to the Safety Data Sheet (SDS) for complete details.

## 6. AVAILABILITY AND COST

PROMA products are widely available in Canada and the Northeast United States. To find a distributor of PROMA products, call **toll-free: 1.866.51.PROMA (77662)**.

## 7. WARRANTY

PROMA warrants that this product is manufactured using quality raw materials and is of merchantable quality and suitable for the purpose for which it was intended. PROMA's liability under this warranty shall be limited to the replacement of its product proven to be defective. Neither seller nor manufacturer shall be liable for any injury, loss or damage, direct or consequential, arising from the use of/or the inability to use this product.

## 8. MAINTENANCE

Product requires no special maintenance.

## 9. TECHNICAL SERVICE

For more detailed information on this product, please contact our technical department for proper recommendations and job field assistance. **Toll-free: 1.866.51.PROMA (77662)**.

## 10. FILING SYSTEM

Additional information is available upon request, or by visiting [www.proma.ca](http://www.proma.ca).

---

### PROMA Adhesives Inc.

9801, Parkway, Anjou, Quebec Canada H1J 1P3

Tel: 514.852.8585

Fax: 514.852.8225

Toll-free: 1 866.51.PROMA (77662)

Email: [info@proma.ca](mailto:info@proma.ca)

© 2018 PROMA Adhesives, Inc.